

# NOB HILL ADDITION

BLOCK 14

TAXING UNIT - 25

IN OGDEN CITY

PREFIX - 13-090

SCALE 1" = 50'

SEE PAGE 89

25TH STREET

STREET

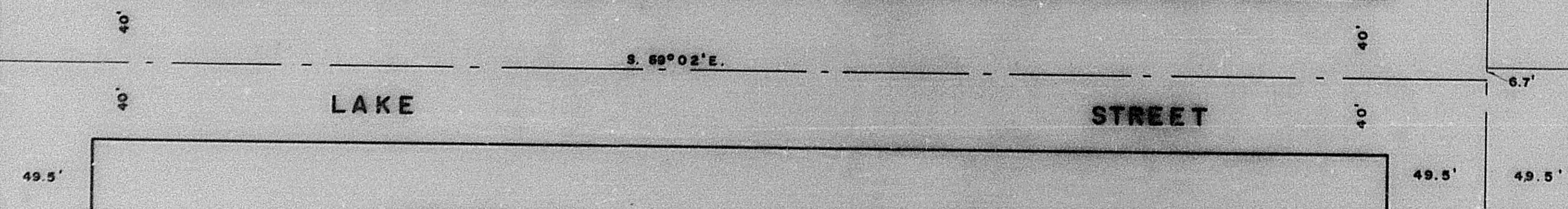
S. 89°02'E.

SEE PAGE 91

POLK AVENUE

TAYLOR AVENUE

1	BOYD LEO EWS. GAYLENE	0001	16'	55'
2	BAKER EWS. LYN M.	0002	50'	55'
3	PETER E. HANSE EWS. LYN M.	0003	50'	55'
4	WILMA GROSE	0004	50'	55'
5	ALVIN GLENN MCDONALD EWS. HELEN	0005	50'	55'
6	COMMERCIA SECURITY BANK - TRUSTEE-	0006	50'	55'
7	LOLA E. DIVELBISS	0007	50'	55'
8	ANTOINETTE THORSTENSEN	0008	50'	55'
9	NICHOLAS G. CONLEY EWS. DANA M.	0009	50'	55'
10	WILLIAM A. BORIN EWS. MARGA J.	0010	50'	55'
11	CHARLES LEE CRITTENDEN EWS. DAMELA WHEELWRIGHT	0011	50'	55'
12	L.A. BERG EWS. BERTHA B.	0012	50'	55'
13	FAYE S HANSON	0013	50'	55'
14	ADM. OF V.A.	0014	50'	55'
15	ISAAC S. JOHN EWS. GUSSIE B.	0015	50'	55'
16	CLAIR C. BENNETT EWS. BONNIE L.	0016	50'	55'
17	LULA D. WARTMAN	0017	50'	55'
18	VERNE L. DESPAIN EWS. EDNA W.	0018	50'	55'
19	FIRST SECURITY BANK OF UTAH, N.A. AS TRUSTEE	0019	50'	55'
20	FRANK VANWHY EWS. NELLIE	0020	50'	55'
21	JULIAN R. STEPHENS EWS. MARGARET JONES	0021	50'	55'
22	LUCILLE MARQUARDT	0022	50'	55'
23	VERNON M. ALLEN EWS. HELEN C.	0023	50'	55'
24	CHARLES D. HOOPER EWS. GUSSIE D. HOOPER	0024	50'	55'
25	DORA GUSSIE HOOPER	0025	50'	55'
26	STEVE D. PARKE EWS. LINDA J.	0026	50'	55'



\* ORIG. DED. PLAT  
• OGDEN CITY ENG. DEPT. PLATS

SEE BOOK 2, PAGE 71